

Year 2

Summer 1 topic: How is Britain different from India?



WORD	MEANING
Habitats	Where animals and plants live
Adapted	How animals and plants have special characteristics that suit where they live
Food chain	Transfer of energy from one species to another
Species	Group of animals, plants or other living things that share characteristics
Evergreen	A plant that doesn't lose its leaves
Deciduous trees	Giant flowering plants that lose their leaves
Freedom	The power to do what you want to do
Independence	Freedom from the control or influence of others
Migration	When animals move on a regular cycle or when humans move from one place to another to stay there
Emigration	Leaving one country to go and live in another
Border	A boundary, especially of a country or state
Emperor	A man who rules over, or is head of state of, an empire
Empress	A woman who rules over, or is head of state of, an empire

Dual coding (words & images)

habitats



evergreen



migration



adapted



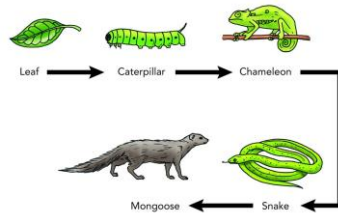
deciduous trees



emigration



food chains



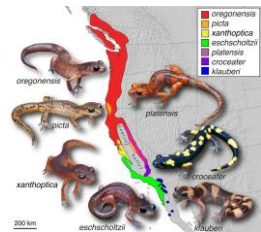
freedom



border



species



independence



Emperor
Empress

