



Garfield Primary
Today's children, tomorrow's future.

FRIDAY FLYER

Friday 13th November 2015

Headteacher's Message

I was delighted to see so many parents and carers attend Mr Newson's presentation on 'My Maths' and 'How we assess your child's progress' at Garfield.

It was just the kind of parental engagement we want to see at Garfield and I know how interested all of our parents are in their child's education .

We plan to organise more events over the year to ensure we are supporting learning at home and that parents are clear on how and what their children learn at school.

Ms Karen Khwaja
Wishing you all a restful weekend.

Welcome to New Staff

This week we welcome Mr Mitchell Hill as our new assistant Site Manager.



Wishing all our pupils, parents and staff a Happy Diwali.

NOVEMBER KEEPING SAFE MONTH AT GARFIELD

This month the children will be learning about different ways to keep safe. At home you might want to talk to them about some of them:

Bullying, Fireworks, Internet Safety, Road Safety, Cycling Safely, Hygiene, Drugs, Education, Stranger Danger, Fire Safety and Personal Safety.

IMPORTANT NEWS

Partial closure of Palmers Road from Friday 13th November. Palmers Road will be closed between junction of Springfield and junction of Upper Park Road. No parking will be available and diversions will be in place for up to 10 days. This is to update estate and sewer water works.

If you have any concerns regarding these roadworks, Glenea can be contacted on 0208 550 8491 during working hours or on 07593772848 outside of this time.



In addition, Enfield Council's SEP Response Team is providing a 24 hour phone service if you would like to speak directly to the Council. The Team can be contacted on 0208 379 5364 or by e-mail at

Thursday 19th November (day before inset) will be non uniform day for Helping Hands donations for Christmas Fete



VALUE OF THE MONTH HONESTY

Discuss with your child why it is important to be honest.

DIARY DATES

Monday 16th November

- ◆ Year 4 Fuchsia & Flamingo Diwali Assembly - 2:15pm
- ◆ Year 5/6 Girls' Football Club (3.20pm-4.20pm)
- ◆ Year 6 Reading Club ((3.30pm-4.30pm)
- ◆ KS2 Drama class (3:30pm-4:15pm)
- ◆ Year 6 Art Club (3:30pm-4:15pm)
- ◆ Year 6 RAF Museum trip

Tuesday 17th November

- ◆ Year 5/6 Athletics Club (8am-8.45am)
- ◆ Year 5/6 Boys' football Club (3.15pm-4.30pm)
- ◆ Years 5/6 Table Tennis (3.30-4.30)
- ◆ KS2 Aim for the Stars (3.30pm-4.15pm)

Wednesday 18th November

- ◆ Piano lessons with Odele Prince -(9am)
- ◆ Year 5 Reading Club (3.30pm-4.30pm)
- ◆ KS2 Instrumental Group (3.30pm-4.30pm)
- ◆ Years1/2 Multi Sport Club (3.30pm-4.30pm)

Thursday 19th November

- ◆ Piano lessons with Jenny Carr- (9am)
- ◆ Year 5/6 Netball Club (3.15pm-4.30pm)
- ◆ KS1 Dance Club (3.30pm-4.30pm)
- ◆ Year 4 Reading club (3.15-4.15pm)
- ◆ KS1 Art Club (3:15pm-4:30pm)
- ◆ Years 3/4/5 Steel Pans (3.15pm-4.30pm)
- ◆ Years 1/2 Art & Craft (3.30pm-4.30pm)
- ◆ Non Uniform day (for Christmas donations)

Friday 20th November

Inset day — SCHOOL CLOSED

FUTURE DATES

- Friday 27th November: Christmas Fair 3:30pm-5.30pm
- Wednesday 2nd December Year 1 Science Museum
- Thursday 10th December: Parents Evening 3:30-7:30pm

GYMNASTICS PE COURSE

Last Thursday saw Garfield host a Gymnastics course for other teachers who work in schools around Enfield to observe a high quality Gymnastics PE lesson being taught. Pupils in Robin, Flamingo and Hellebore classes took part in the lessons throughout the day and they did themselves and the school proud.

A huge thank you to Fiona Hathaway who came in to deliver the lessons and she herself was full of praise for the pupils and the staff who helped make Fiona and the other teachers feel very welcome.



MOVEMBER

Many of the male members of staff will be growing moustaches this month to support Movember, which is a charity raising awareness and money for men's prostate cancer. If you would like to donate money to this charity please come to the school office.

Thank you.





Years 4 Fuchsia and Flamingo parents are invited to attend the Diwali Assembly next Monday 16th November at 2:15pm. The parents of children from Marigold who are performing the stick dance are also very welcome.

PHONICS STICKERS

In year 1, the children have been busy working on their phonics and learning new sounds each week. Each child has been given stickers showing these sounds. This is to help them remember what they have learned and also to help them to discuss new sounds with the people around them. If you see a child from year one with a phonics sticker, please speak to them about the sound on the sticker. This will really help them with their learning. Thank you for your support!



MISSING SWEAT SHIRT

Sebi in Year 4 Flamingo has a missing sweat shirt. It is clearly labelled. Please could parents have a look. If found please return to school office. Thank you.

Dear Year 2 Parents, please note that parents and carers are not able to enter the school or classrooms in the morning to speak to teachers for reasons of safeguarding and also because they are teaching and registering the children at this time. If you would like to speak to your child's teacher, please do so in the playground in the morning or after school. Thank you for your support.



SEND INFORMATION REPORT

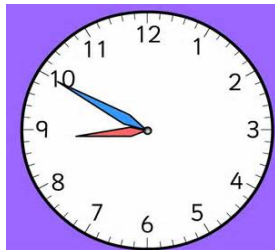


This report, about children with special needs in the school, is on the School section of the website. If any parent/carer would like to look at this report, make any comments or want more information, please contact Ms Samuel, Assistant Head, via the office.

LATES

Punctuality at Garfield is very important and we urge parents to ensure your child arrives to school safely and on time. We will be holding attendance and punctuality clinics every week to meet with parents whose children are continuously late and have poor attendance.

CLASS	W/E 06.11.15	W/E 13.11.15	Difference
Robin	14	13	-1
Rose	11	6	-5
Ruby	15	18	+3
Bluebell	8	5	-3
Kingfisher	3	4	+1
Sapphire	10	8	-2
Marigold	2	3	+1
Tiger	10	5	-5
Flamingo	4	4	0
Fuchsia	5	3	-2
Hummingbird	10	13	+3
Lavender	7	3	-4
Grasshopper	6	5	-1
Hellebore	4	5	+1
TOTAL	109	95	-14



Christmas Cards at Garfield

Our Christmas cards have arrived! Please check your child's book bag for their Christmas card design. If you would like to order cards, gift tags, tea towels or mugs with that design, please return the order form by Monday 16th November. Payment should be sent in a sealed envelope in cash to your child's teacher or the office. Thank you very much, Mrs Godfrey and Helping Hands.



SUPPORTING CHARITIES AT GARFIELD

Over the academic year we will be supporting a number of different charities

Autumn

Children in Need (13-11-15)

Poppy Appeal - The Royal British Legion (22-10-15 to 11-11-15)

Spring

Wear It. Beat It - British Heart Foundation (5-2-16)

Comic Relief (13-3-16)

Summer

To be confirmed

Margaret Walls



NURSERY AND RECEPTION 2016

We are now accepting applications for Nursery and Reception 2016.

If your child was born 01/09/2012—31/0/2013 they are due to start Nursery in September 2016.

If your child was born 01/09/2011—31/10/2012 they are due to start in Reception September 2016.

Please come to the school office for more information or go to the Enfield admissions website <http://www.enfield.gov.uk/admissions>

Ms Khwaja also organises regular tours for prospective parents considering a place for their children at Garfield. Please see website for dates.



ATTENDANCE

Week Ending 6th November 2015

Robin = 92.50%
 Rose = 85.71%
 Ruby = 85.83%
 Bluebell = 91.67%
 Kingfisher = 94.00%
 Sapphire = 88.00%
 Marigold = 93.46%
 Tiger = 95.71%
 Flamingo = 95.86%
 Fuchsia = 94.83%
 Hummingbird = 93.67%
 Lavender = 88.93%
 Grasshopper = 89.33%
 Hellebore = 91.72%



Congratulations to Flamingo for achieving 95.86% and to all classes who have achieved excellent attendance of over 95%

TOTAL = 91.56%

Let's aim to achieve the national standard of 95% next week