



**Garfield Primary**  
Today's children, tomorrow's future.

# FRIDAY FLYER

## Friday 23rd October 2015

### Headteacher's Message

This week, a key document called the "Raise Online" came out. This is produced by the Department of Education and compares the attainment and progress of all schools nationally.

Whilst I will send out a more detailed letter to you after half term, I am delighted to share with you some of the many great headlines.

Garfield is in the top 6% of all schools nationally for the progress our pupils made from KS1 and KS2. Attainment at KS2 (Level 4+) was above national for all subjects (Reading, Writing, Maths, Spelling, Punctuation and Grammar (SPAG))

This means Garfield had outstanding progress.

A huge well done to the pupils, staff, parents and governors who worked so well to achieve this result.

Wishing you a wonderful half term  
Ms Karen Khwaja

### DIARY DATES

#### Monday 2nd November

- ◆ Year 5/6 Girls' Football Club (3.20pm-4.20pm)
- ◆ Year 6 Reading Club ((3.30pm-4.30pm)
- ◆ KS2 Drama class (3:30pm-4:15pm)
- ◆ Year 6 Art Club (3:30pm-4:15pm)

#### Tuesday 3rd November

- ◆ Year 5/6 Athletics Club (8am-8.45am)
- ◆ Year 5/6 Boys' football Club (3.15pm-4.30pm)
- ◆ Years 5/6 Table Tennis (3.30-4.30)
- ◆ KS2 Aim for the Stars (3.30pm-4.15pm)

#### Wednesday 4th November

- ◆ Piano lessons with Odele Prince -(9am)
- ◆ Year 5 Reading Club (3.30pm-4.30pm)
- ◆ KS2 Instrumental Group (3.30pm-4.30pm)
- ◆ Year 2 Freshwater Theatre
- ◆ Marigold trip to Natural History Museum (all day)

#### Thursday 5th November

- ◆ Piano lessons with Jenny Carr- (9am)
- ◆ Year 5/6 Netball Club (3.15pm-4.30pm)
- ◆ KS1 Dance Club (3.30pm-4.30pm)
- ◆ Year 4 Reading club (3:15-4:15pm)
- ◆ KS1 Art Club (3:15pm-4:30pm)
- ◆ Years 3/4/5 Steel Pans (3:15pm-4:30pm)

#### Friday 6th November

- ◆ KS2 Dance Club (3.30pm-4.30pm)
- ◆ Years 1-6 Homework Club (3.15pm-4.30pm)
- ◆ KS1 Choir (3.15-4pm)
- ◆ Year 5/6 Tag Rugby (3.15pm-4.30pm)
- ◆ Cup Winner Assembly

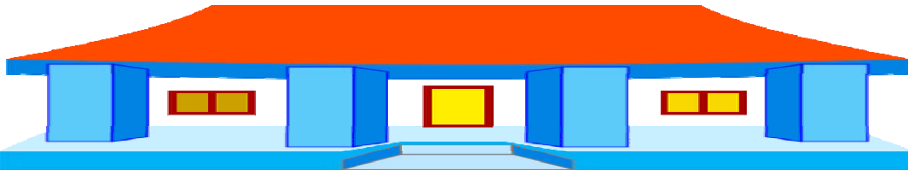
### BOOK BAGS

Sorry about the delay for the book bags, They will be on sale the first week back and we will text you times and days.



### NEW BUILD UPDATE

We know that the build is experiencing some delays to the schedule currently. The Head and governing body will keep parents and pupils updated and give plenty of notice of any additional closure days planned linked to the move to the new site.



### CONGRATULATIONS

We are delighted to announce that Ms Matas, our Attendance Officer, had a baby girl, Georgia, on Monday. Both mother and baby are doing well and we hope they will pop in shortly.



### POPPY APPEAL

We will be collecting for the Poppy Appeal after the school half term.



### KINGSWOOD RESIDENTIAL

Our year 5/6 pupils and staff are expected back at the end of the day from an exciting residential week.



**REMINDER - THE CLOCKS GO BACK AN HOUR FROM SUNDAY**



### FUTURE DATES

- November Monday 9th November: Year 6 cycling Workshops
- Diwali Assembly (Time TBC)
- Friday 27th November: Christmas Fair 3:30pm-5.30pm
- Friday 20th November: Inset day – SCHOOL CLOSED
- Thursday 10th December: Parents Evening

### BIKEABILITY CYCLE TRAINING

We are pleased to inform you that we have the opportunity to offer free Bikeability Level1 & 2 Cycle Training to Year 5&6 children. The training will be provided by Cycle Confident Ltd who work with the Road Safety Department at the Enfield council. Our training will commence the week beginning Monday 9th November.





## Suitable Outdoor Clothing

As the weather has started to change it is important that your child is wearing a suitable warm and waterproof coat to school. As well as walking to and from school, the children are outside for break and lunchtimes and occasionally they might be playing in light rain.



## Christmas Cards at Garfield

Very soon, we will be designing our own Christmas cards again for you to order. It will be a project run by Helping Hands to raise funds for our school. Each child will get a template and then a sample of their card which can be ordered in packs of 12 for £5. Please talk to your child about motives you would like on your cards - it's a fun way of sending personalised cards and supporting our school. Thank you very much.

Mrs Godfrey

## NURSERY AND RECEPTION 2016

We are now accepting applications for Nursery and Reception 2016.

If your child was born 01/09/2012—31/0/2013 they are due to start Nursery in September 2016.

If your child was born 01/09/2011—31/10/2012 they are due to start in Reception September 2016.

Please come to the school office for more information or go to the Enfield admissions website

<http://www.enfield.gov.uk/admissions>

Ms Khwaja also organises regular tours for prospective parents considering a place for their children at Garfield. Please see website for dates.



## SUPPORTING CHARITIES AT GARFIELD

Over the academic year we will be supporting a number of different charities

### Autumn

Children in Need (13-11-15)

Poppy Appeal – The Royal British Legion (22-10-15 to 11-11-15)

### Spring

Wear It. Beat It – British Heart Foundation (5-2-16)

Comic Relief (13-3-16)

### Summer

To be confirmed

Margaret Walls

give & save  
charity  
days

## Online Maths Homework

We are pleased to tell you that pupils at Garfield School will soon have access to an exciting new computer based maths homework scheme. This scheme is called 'My Maths' and it allows your child to receive lessons and complete homework online.

'My Maths' is widely used by a number of schools and has been shown to really help children progress in this subject.

Your child should have received two letters about this scheme from their class



## REMINDER

All Year 6 Parents, Secondary School Applications must be completed by

**31st OCTOBER 2015**



## SEND INFORMATION REPORT

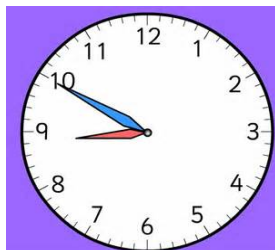


This report is on the School section of the Website. If any parent/carer would like to look at this report, make any comments or want more information, please contact Ms Samuel Assistant Head via the office.

## LATES

Punctuality at Garfield is very important and we urge parents to ensure your child arrives to school safely and on time as we will be holding attendance and punctuality clinics every week to meet with parents whose children are continuously late and have poor attendance.

CLASS	W/E 16.10.15	W/E 23.10.15	Difference
Robin	20	16	-4
Rose	12	5	-7
Ruby	14	18	+4
Bluebell	4	7	+3
Kingfisher	10	3	-7
Sapphire	9	12	+3
Marigold	4	3	-1
Tiger	16	10	-6
Flamingo	5	5	0
Fuchsia	0	2	+2
Hummingbird	4	5	+1
Lavender	15	3	-12
Grasshopper	6	13	+7
Hellebore	3	5	+2
TOTAL	122	107	-15



## ATTENDANCE

### Week Ending 16th October 2015

Robin = 97.91%  
 Rose = 95.71%  
 Ruby = 92.08%  
 Bluebell = 94.67%  
 Kingfisher = 96.67%  
 Sapphire = 92.41%  
 Marigold = 100.00%  
 Tiger = 97.14%  
 Flamingo = 95.17%  
 Fuchsia = 95.17%  
 Hummingbird = 96.67%  
 Lavender = 93.93%  
 Grasshopper = 93.00%  
 Hellebore = 96.07%



Congratulations to Marigold for achieving 100% and to all classes who have achieved excellent attendance of over 95%

TOTAL = 95.44%

Well done for achieving slightly over the national standard this week.