



**Garfield Primary**  
Today's children, tomorrow's future.

# FRIDAY FLYER

## Friday 16th October 2015

### Headteacher's Message

This week has been Diversity week at Garfield and we organised some special events and learning for our lovely pupils.

Each class has been learning all about a particular country and will share their knowledge in a 'Diversity' assembly today.

We had a series of African Drumming Workshops on Thursday which our pupils really enjoyed. We are very proud to be a multi-cultural, diverse school community. We see it as one of our strengths that enriches our experiences at Garfield.

Wishing you a happy weekend.

Ms Karen Khwaja

### KINGSWOOD RESIDENTIAL

Next week some of our year 5/6 pupils are having a Residential week at Kingswood. We know there will be lots of fun!

Staff who are accompanying the children at Kingswood are Miss Cemal, Mr Flatley, Miss Erol and Mrs Russell.

For the children not going to Kingswood, Mr Flatley's class will be covered by Mr Barnard (who is currently our year 6 booster teacher) and Miss Cemal's class will be covered by Miss Collins. We will make sure they have a fun week learning too!



### DIARY DATES

#### Monday 19th October

- Year 5/6 Girls' Football Club (3.20pm-4.20pm)
- Year 6 Reading Club (CANCELLED)
- KS2 Drama class (3:30pm-4:15pm)
- Year 6 Art Club (3:30pm-4:15pm)
- Year 5/6 Trip to Kingswood

#### Tuesday 20th October:

- Year 5/6 Athletics Club (8am-8.45am)
- Year 3/4 Art/Crafts Club (3.15pm-4.30pm)
- Year 5/6 Boys' football Club (CANCELLED)
- Years 5/6 Table Tennis (3.30-4.30)
- KS2 Aim for the Stars (3.30pm-4.15pm)

#### Wednesday 21st October:

- Piano lessons with Odele Prince -(9am)
- Year 5 Reading Club (CANCELLED)
- KS2 Instrumental Group (3.30pm-4.30pm)
- Years 1/2 Multi-Sports (3:30pm-4:30pm)

#### Thursday 22nd October:

- Year 1 Garfield Tumblers (8am-8.45am)
- Piano lessons with Jenny Carr- (9am)
- Year 5/6 Netball Club (Cancelled - teacher on Kingswood school trip)
- KS1 Dance Club (3.30pm-4.30pm)
- Year 4 Reading club (3:15-4:15pm)
- KS1 Art Club (3:15pm-4:30pm)
- Years 3/4/5 Steel Pans (3:15pm-4:30pm)
- Freshwater Theatre company in Reception

#### Friday 23rd October:

- KS2 Dance Club (3.30pm-4.30pm)
- Years 1-6 Homework Club (3.15pm-4.30pm)
- KS1 Choir (3.15-4pm)
- Year 5/6 Tag Rugby (3.15pm-4.30pm)
- Helping Hands AGM (9-10.00am) all welcome
- Tiger Class Assembly (2:30pm)

### Monday 26th-30th October Half Term (School is closed)

#### FUTURE DATES

Monday 2nd November: Keeping Safe Month

Wednesday 4th November Year 2 Freshwater Theatre

Wednesday 4th November-Marigold trip to Natural History Museum (all day)

Friday 6th November Cup Winner Assembly

Monday 9th November Year 6 cycling Workshops

Diwali Assembly (Time TBC)

Friday 27th November: Christmas Fair 3:30pm-5.30pm

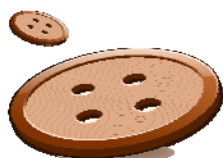
Thursday 10th December : Parents Evening

### Online Maths Homework

We are pleased to tell you that pupils at Garfield School will soon have access to an exciting new computer based maths homework scheme. This scheme is called 'My Maths' and it allows your child to receive lessons and complete homework online.

'My Maths' is widely used by a number of schools and has been shown to really help children progress in this subject.

Your child should have received two letters about this scheme from their class teacher either today or Monday and



### Spare Buttons

Anyone who has any spare buttons that are not needed, please bring them into the office for the attention Mrs C Walls, Learning Mentor.





## Suitable Outdoor Clothing

As the weather has started to change it is important that your child is wearing a suitable warm and waterproof coat to school. As well as walking to and from school, the children are outside for break and lunchtimes and occasionally they might be playing in light rain.

## NURSERY AND RECEPTION 2016

We are now accepting applications for Nursery and Reception 2016.

If your child was born 01/09/2012—31/0/2013 they are due to start Nursery in September 2016.

If your child was born 01/09/2011—31/10/2012 they are due to start in Reception September 2016.

Please come to the school office for more information or go to the Enfield admissions website

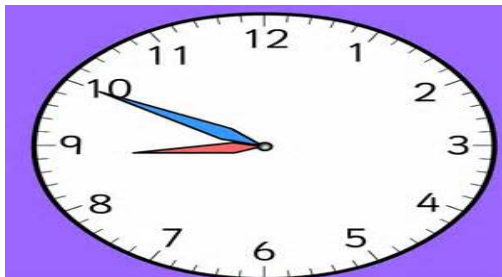
<http://www.enfield.gov.uk/admissions>

Ms Khwaja also organises regular tours for prospective parents considering a place for their children at Garfield. Please see website for dates.



## LATES

Punctuality at Garfield is very important and we urge parents to ensure your child arrives to school safely and on time as we will be holding attendance and punctuality clinics every week to meet with parents whose children are continuously late and have poor attendance.



CLASS	W/E 09.10.15	W/E 16.10.15	Difference
Robin	9	20	+11
Rose	12	12	0
Ruby	11	14	+3
Bluebell	1	4	+3
Kingfisher	1	10	+9
Sapphire	8	9	+1
Marigold	0	4	+4
Tiger	9	16	+7
Flamingo	1	5	+4
Fuchsia	4	0	-4
Hummingbird	5	4	-1
Lavender	5	15	+10
Grasshopper	6	6	0
Hellebore	2	3	+1
TOTAL	74	122	+48

## Christmas Cards at Garfield



Very soon, we will be designing our own Christmas cards again for you to order. It will be a project run by Helping Hands to raise funds for our school. Each child will get a template and then a sample of their card which can be ordered in packs of 12 for £5. Please talk to your child about motives you would like on your cards - it's a fun way of sending personalised cards and supporting our school.

Thank you very much.

Mrs Godfrey

## SUPPORTING CHARITIES AT GARFIELD

Over the academic year we will be supporting a number of different charities

### Autumn

Children in Need (13-11-15)

Poppy Appeal – The Royal British Legion (22-10-15 to 11-11-15)

### Spring

Wear It. Beat It – British Heart Foundation

(5-2-16)

Comic Relief (13-3-16)

### Summer

To be confirmed

Margaret Walls

give & save  
charity  
days

## ATTENDANCE

### Week Ending 9th October 2015

Robin = 97.86%  
Rose = 88.62%  
Ruby = 95.30%  
Bluebell = 98.33%  
Kingfisher = 95.00%  
Sapphire = 92.41%  
Marigold = 100.00%  
Tiger = 94.14%  
Flamingo = 92.00%  
Fuchsia = 95.86%  
Hummingbird = 95.86%  
Lavender = 95.71%  
Grasshopper = 95.33%  
Hellebore = 91.43%



Congratulations to Marigold for achieving 100% and to all classes who have achieved excellent attendance of over 95%

TOTAL = 94.77%

National expected standard is 95%

Our attendance figures are improving. Please note, a member of the Senior Team, alongside our Educational Welfare Officer will be meeting with parents where there are concerns regarding attendance and punctuality.